

**1800mm INTERNAL DROP MANHOLE**  
MH 1-51, MH 1-61  
SCALE 1:25

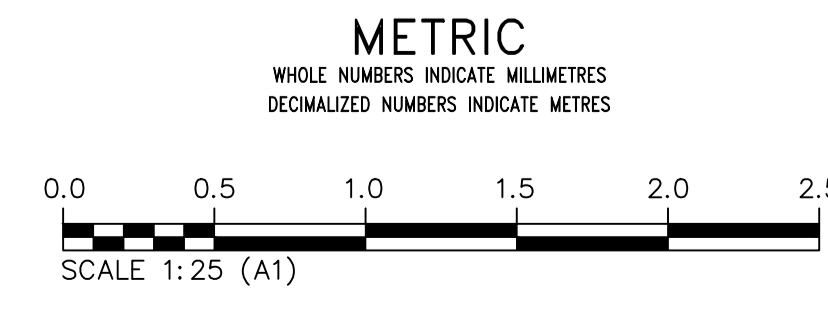
**1800mm INTERNAL DUAL DROP MANHOLE**  
MH 1-14, MH 1-27, MH 1-39  
SCALE 1:25

**1800mm INTERNAL TRIPLE DROP MANHOLE**  
MH 1-21  
SCALE 1:25

**1500mm INTERNAL DROP MANHOLE**  
MH 1-31  
SCALE 1:25



**MANHOLE NOTE:**  
ALL MANHOLES WITHIN THE PLANNED ROAD RENEWAL ON LEILA AVENUE AND MCGREGOR STREET SHALL HAVE 300mm HIGH 750 DIA. MANHOLE BARREL SECTION AND A 50mm ADJUSTING RING UNDER THE FRAME TO ALLOW FOR RIM ADJUSTMENTS DURING ROAD RENEWAL



FOR INDEX PAGE  
SEE DWG 13643

LOCATION APPROVED UNDERGROUND STRUCTURES		VERTICAL DATUM: CGVD28 (HT2.0 Geoid)	
HORIZONTAL DATUM: NAD83 (June 1990), Zone 14			
SUPV. U/G STRUCTURES COMMITTEE	DATE	DESIGNED BY: MID	CHECKED BY: TLE
NOTE:		DRAWN BY: GEL	APPROVED BY: RBO
LOCATION OF UNDERGROUND STRUCTURES AS SHOWN ARE BASED ON THE BEST INFORMATION AVAILABLE BUT NO GUARANTEE IS GIVEN THAT ALL EXISTING UTILITIES ARE SHOWN OR THAT THE GIVEN LOCATIONS ARE EXACT. CONFIRMATION OF EXISTENCE AND EXACT LOCATION OF ALL SERVICES MUST BE OBTAINED FROM THE INDIVIDUAL UTILITIES BEFORE PROCEEDING WITH CONSTRUCTION.		SCALE: HORIZONTAL AS NOTED	RELEASED FOR CONSTRUCTION
		VERTICAL AS NOTED	DUANE BAKER
		DATE: 2026/03/10	DATE: 2026/03/12
		NO.	DATE

<b>KGS GROUP</b>	
DESIGNED BY: MID	CHECKED BY: TLE
DRAWN BY: GEL	APPROVED BY: RBO
SCALE: HORIZONTAL AS NOTED	RELEASED FOR CONSTRUCTION
VERTICAL AS NOTED	DUANE BAKER
DATE: 2026/03/10	DATE: 2026/03/12

ENGINEER'S SEAL  
ORIGINAL DRAWING SEALED BY: M.A. IANKOVA-DEDOVA 2026/03/11  
CONSULTANT DRAWING NUMBER: C1-40

**THE CITY OF WINNIPEG**  
WATER AND WASTE DEPARTMENT  
ENGINEERING SERVICES DIVISION

**ARMSTRONG SEWER RELIEF WORKS**  
CONTRACT 1  
**MANHOLE DETAILS**  
SHEET 1

SHEET 37 OF 46  
CITY DRAWING NUMBER  
**13681**